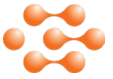


PIPELINE INFORMATION FOR LANDOWNERS AND RESIDENTS



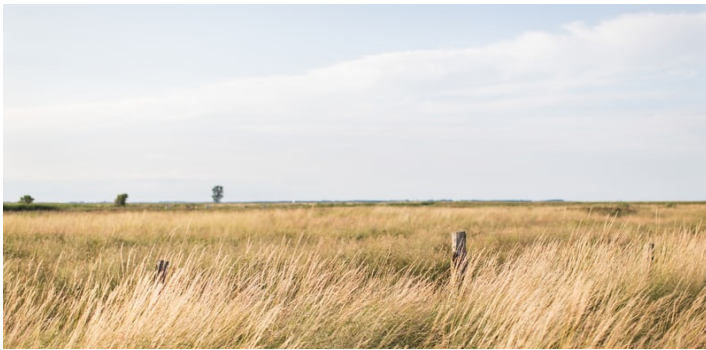
HELLO!

We're providing you with this brochure because you live, work, or have property near a pipeline that Keyera Corporation either owns or operates.



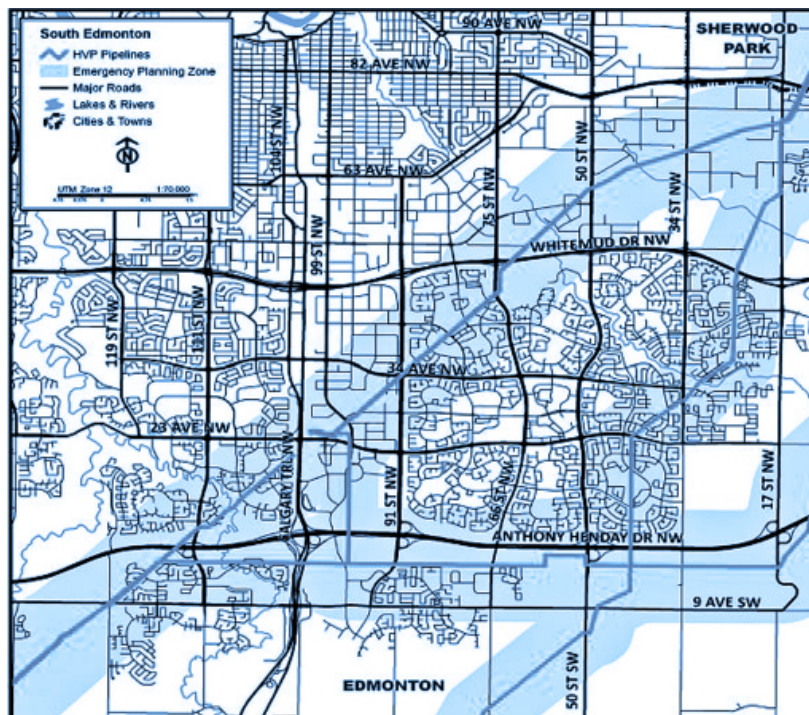
WHO IS KEYERA?

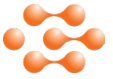
- Keyera operates an integrated Canadian-based midstream business with extensive interconnected assets and depth of expertise in delivering midstream energy solutions.
- Our business consists of natural gas gathering, transportation by pipeline, rail, and trucking, storage, marketing and sales.
- Keyera focuses on operational safety, and has done so for more than 20 years.
- Our vision is to be the North American leader in delivering energy infrastructure solutions.



WHERE ARE OUR PIPELINES LOCATED?

In the Edmonton area, Keyera has more than 50 kilometers (50,000 meters) of pipelines. We're committed to meeting all industry standards and regulations, often exceeding, to prevent pipeline failures and provide safe operation of our pipelines.





ABOUT PIPELINES

PIPELINE SAFETY

Safety is the focus at every stage of the pipeline lifecycle.

Pipelines are designed, built and operated to be safe, reliable, and sustainable. In fact, they are the safest and most efficient way to transport products like oil and natural gas liquids. Keyera's pipelines and facilities are designed, constructed, and operated in a safe and environmentally responsible manner.



OPERATIONAL EXCELLENCE

We are proud members of the community, and our employees live and work in the area. This is part of why Keyera is committed to conducting its operations in a manner that protects the health and safety of the public and the people who work at our facilities or with our equipment.

Through our Operational Excellence program and compliance with all regulatory requirements, Keyera has developed a track record we are proud of for protecting workers, the environment and the community. When it comes to pipelines, Keyera uses a defined process that includes routine inspections, maintenance activity, and testing to check that our pipelines are operating safely.

There are sensors which operate continuously, night and day, to monitor the operating conditions of our pipelines. These sensors are overseen by our dedicated employees 24/7. We conduct ground inspections to get a detailed view and aerial inspections for a broad view all to ensure that our pipelines are operating safely.

SENSORS

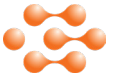


GROUND INSPECTIONS



AERIAL INSPECTIONS





RIGHT OF WAY (ROW)

- The area of land where a pipeline is located is called a right-of-way (ROW).
- For 30 meters (100 feet) on either side of the pipeline is an area called the Prescribed Area or Controlled Area.



You may have seen a ROW corridor previously and recognized that it is free of trees, building and other structures. This clearing is maintained on purpose so that Keyera employees and contractors can access the pipeline for regular operations, inspections, maintenance, testing, and in the rare event of an emergency. Only a Keyera representative can tell you the exact location of a pipeline. Pipeline marker signs only provide an approximate location of the pipeline.



PIPELINE MARKERS

Pipeline markers are there to provide you with important safety information including what type of product is carried in the pipe, the local One Call number, and Keyera's 24-hour emergency phone number (1-800-661-5642)

GETTING CONSENT

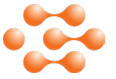
Certain activities may need written consent from Keyera. If you're uncertain about whether your activity requires consent you can contact Keyera or contact Alberta One Call Corp. at 1-800-242-3447 (albertaonecall.com).

OBTAINING A CROSSING AGREEMENT: Not sure if you need a crossing agreement? Crossing agreements are a written consent that let you know whether or not you can begin a planned activity. The agreement is required before any work can begin and is typically managed through One Call.

CALL BEFORE YOU DIG

Do not begin any work near a ROW before notifying your local One-Call Centre. A Keyera representative will be able to locate and mark the location of the pipeline. Afterwards they will discuss any restrictions about digging activities with you.

You can access the nearest One-Call Centre to make a locate request anywhere in Canada at: **1-800-242-3447** or clickbeforeyoudig.com.



PREVENTING DAMAGE TO KEYERA PIPELINES



Damage to pipelines often happens from direct contact with the pipe during excavation or other ground disturbance activities. Before you begin any project, from landscaping to construction, digging to excavating, notify Keyera and your local One-Call Centre. As a partner in pipeline safety, these calls are your first steps to prevent damage from happening to pipelines.

Before you begin a project, it's important to receive written consent from Keyera for any of the following activities:

- Construction of a facility across, on, along, or under a pipeline (including ROWs).
- Ground disturbance activities in the Prescribed Area/Controlled Area, 30 meters (100 feet) on either side of the pipeline.
- Operation of a vehicle or mobile equipment across a ROW, outside the travelled portion of a highway or public road.
- Any activity that the company deems may negatively impact the safety of the pipeline.

WHAT IS GROUND DISTURBANCE ACTIVITY?

- Any activity that results in a disturbance of the earth to a depth of more than 30 centimeters.
- Any activity that reduces the earth cover over any pipeline to less than the cover provided when the pipeline was installed.
- Cultivation activity to a depth greater than 45 centimeters (18 inches) below the surface of the ground.



Tree planting



Fence installation



Auguring



Road construction



Ground levelling



Drainage tile installation



Landscaping

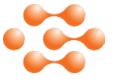


Poles or anchors



Irrigation systems

WORKING TOGETHER FOR SAFETY



RECOGNIZING THE WARNING SIGNS

Pipeline leaks are rare, but it is still important to understand the warning signs.

Visual signs

- A mist-like cloud or white vapor stream above the pipeline
- A puddle of black oily liquid or an oily sheen floating on a water surface
- Decaying or dead vegetation surrounded by healthy green vegetation
- A change in color on snow or vegetation
- Earth or dirt appearing to be thrown or blown up into the air
- Ice or frost on the ground in unexpected locations or weather

Sounds and odor signs

- An unfamiliar roaring, hissing, or blowing noise
- A rotten egg like smell



IF YOU SUSPECT A LEAK

In the unlikely event of an emergency, Keyera will immediately shut down the pipeline (if necessary) and activate our Emergency Response plan.

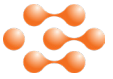
WHAT TO DO:

- Shut-down and abandon any mechanized equipment and move as far away from the leak as possible, avoiding contact with escaping liquids and gases
- Move upwind
- Call 911
- Call Keyera's emergency line which is located on the pipeline marker
- Follow instructions provided to you by Keyera and local emergency responders
- Warn others

WHAT NOT TO DO:

- Do not touch or go near any liquid, gas or vapor cloud
- Do not start your vehicle or any equipment that has an ignition source
- Do not smoke or light matches.
- Do not make sparks
- Do not use any heating sources
- Do not turn on or off anything that may create a spark
- Do not operate or turn any pipeline valves
- Do not try to extinguish any flames or fires

**This includes cell phones, pagers, flashlights, keyless entry remotes, vehicle alarms, and light switches*



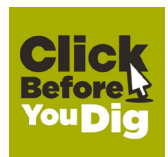
WHAT TO DO IF YOU STRIKE A PIPELINE

Whether it appears there is damage or not, follow these steps:

- 1 Stop all excavation and construction work, move away from the area on foot, let others know to do the same
- 2 Shut off all equipment and machinery
- 3 Call 911 as soon as you are in a safe location
- 4 Call Keyera's emergency number 1-800-661-5642 and explain the situation
- 5 Do not attempt to operate any valves
- 6 Do not begin work again until a Keyera representative authorizes you to do so
- 7 Never cover up any damage (a dents, scrape, or gouge) made to a pipeline

If you notice any unusual or suspicious activity on or near the ROW, please report it by calling 911 and Keyera's 24-hour Emergency number 1-800-661-5642.

**CLICK OR CALL
BEFORE YOU DIG**



HOW TO CONTACT US

Keyera lives and works where it operates, which is why we take safety seriously. Maintaining an open dialogue with our stakeholders like you is critical. If you're wondering how to get in touch with us, you can contact us in any of the following ways:

Community Relations:

Consultation@keyera.com

www.keyera.com



CONTACT US

Community Relations:

Consultation@keyera.com

www.keyera.com

January 2021